

## Features & Benefits

- Supply / exhaust air
- Simple design
- Two different dimensions
- High pressure capability



*Fans designed for horizontal or vertical mounting in locations that are in need of extraction. Examples of facilities: toilet, bath and laundry room. Another use is to use the fan air transportation between two or more rooms through a duct system.*

## Models

### Model Fresh ID100/125

Basic model without internal regulation.

Dimension Ø100/125mm.

## Mounting

Fresh ID100/125 is intended for supply- or exhaust air ventilation and can be mounted vertical or horizontal. The built-in wall mounting bracket can not be dismantled as the electrical installation is positioned in this part.

The fan is marked with an arrow which informs about the air direction.

## Maintenance

The fan should be cleaned once a year for optimal function. Before cleaning the fan the electric voltage must be disconnected.

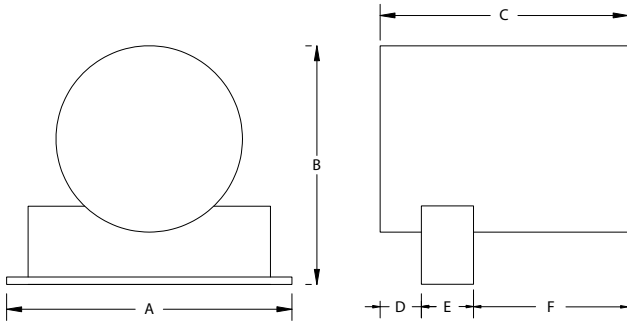
## Specification

Models	Description	Art. no.
ID100	In-Line duct fan Ø100	430051
ID125	In-Line duct fan Ø125	430061

# ID100/125

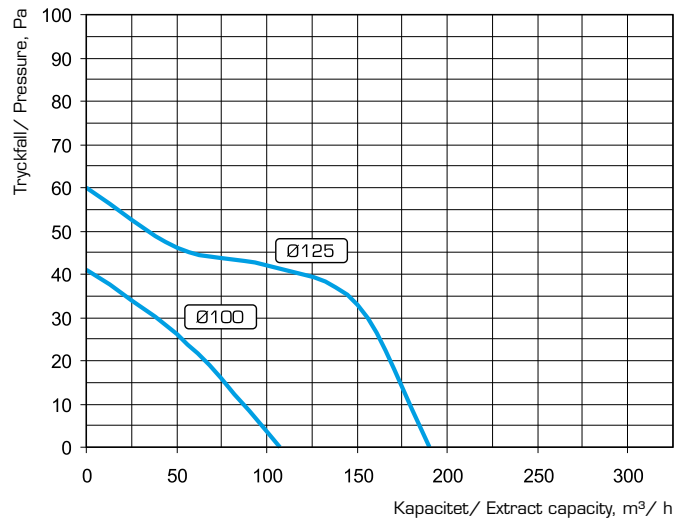
In-Line duct fans

## Dimensions (mm)



ID100	ID125
A: 153	A: 153
B: 128	B: 155
C: 133	C: 150
D: 21	D: 21
E: 28	E: 28
F: 84	F: 101

## Capacity



## Technical data

Model	ID100	ID125
Diameter	Ø 100	Ø 125
Voltage:	220-240 V AC	
Capacity:	107 m³/h	190 m³/h
Power:	14 W	14 W
Pressure:	41 Pa	60 Pa
Soundlevel:	36 dBA (3 m)	38 dBA (3 m)
Protectionclass:	IPX4, CE-marked	
Ambient operating temperature	between 0-45 °C	

## Guarantee

The fan has a three year guarantee for defects of fabrication.

## Recycling

The product is marked with WEEE symbol, which indicates that it must not be disposed together with household waste, but must be recycled at a suitable recycling location in the local municipality.

Fresh AB is a member of Sweden's national recycling system, in accordance with the European WEEE directive.

For more information, see [www.fresh.eu](http://www.fresh.eu)