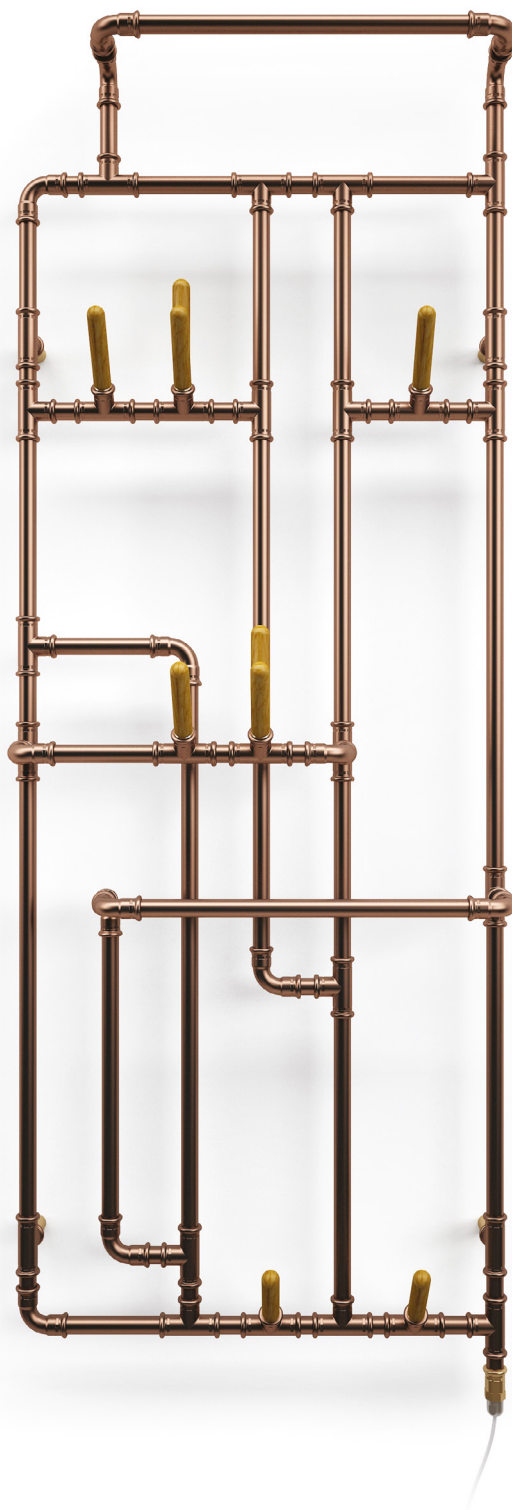


# Pająk E

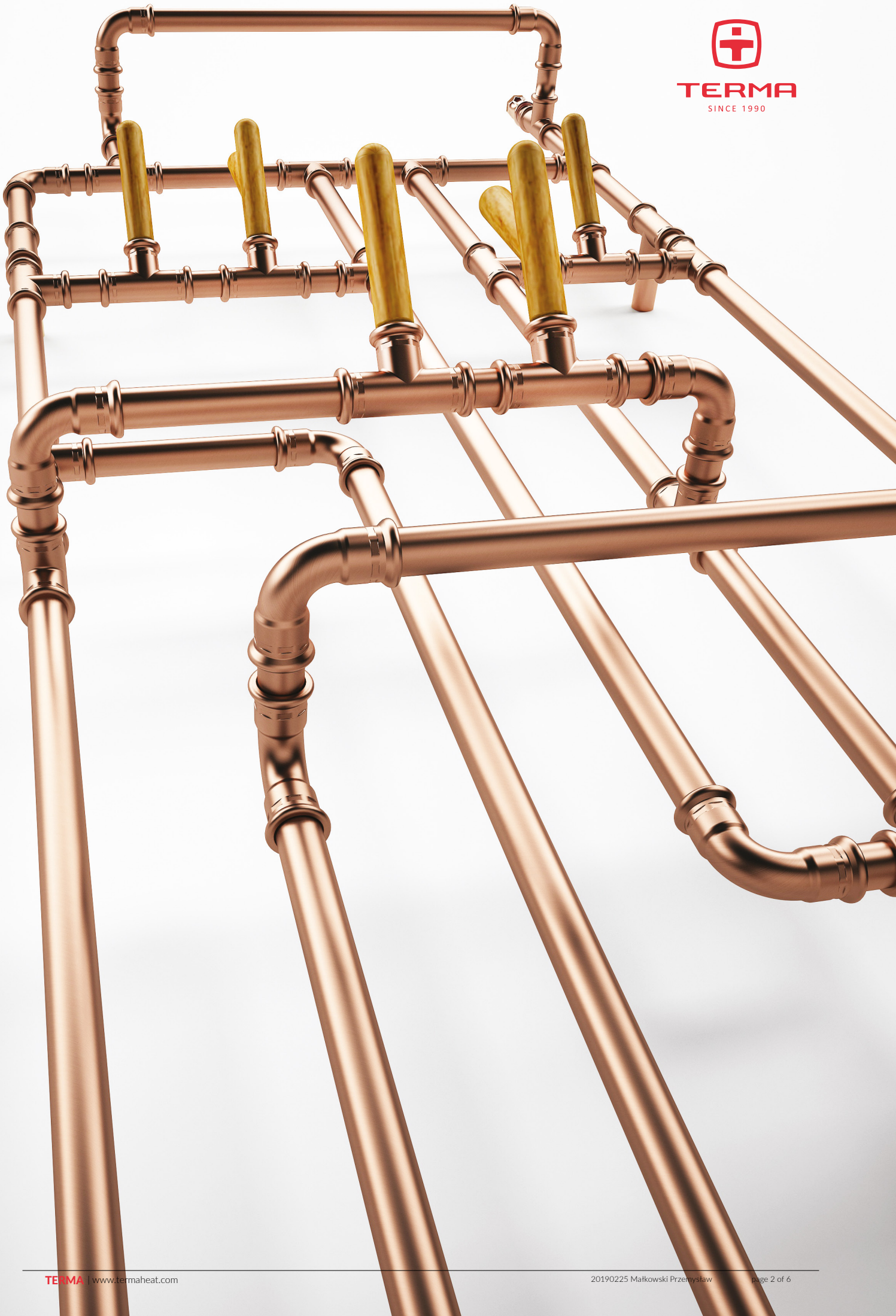


**Pająk E** 1723 $\downarrow$  × 631 $\leftrightarrow$  E8  
colour: Raw Copper | Product made of copper

Heater SIM  
Wooden hangers

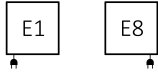


**TERMA**  
SINCE 1990

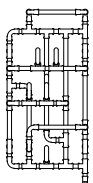




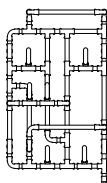
## Connections standardowe:



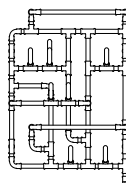
## Available sizes:



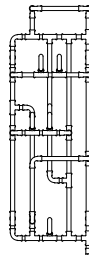
923 x 431  
↓ ↔



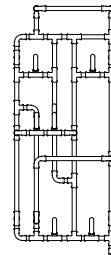
923 x 531



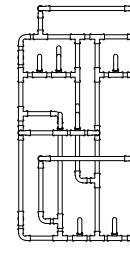
923 x 631



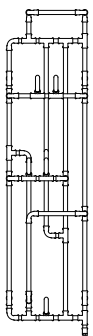
1323 x 431



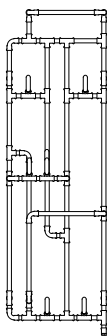
1323 x 531



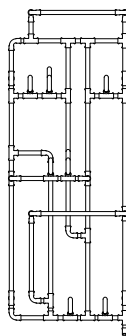
1323 x 631



1723 x 431  
↓ ↔






1723 x 531



1723 x 631

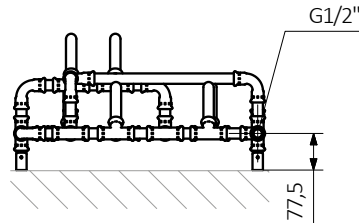
## Specification:

A ↑ [mm]	B ↔ [mm]	 [W]	D [mm]	E [mm]	F [mm]	 [dm <sup>3</sup> ]	 [kg]	Product code <small>Configuration code p. 6</small>
923	431	300	400	505	196,5	2,07	10,56	WLPAJ092043
923	531	400	500	505	196,5	2,14	10,98	WLPAJ092053
923	631	400	600	505	196,5	2,40	11,93	WLPAJ092063
1323	431	400	400	852	196,5	2,64	12,10	WLPAJ132043
1323	531	400	500	852	196,5	2,71	12,57	WLPAJ132053
1323	631	600	600	852	196,5	2,96	13,48	WLPAJ132063
1723	431	400	400	1162	196,5	3,20	13,66	WLPAJ172043
1723	531	600	500	1162	196,5	3,26	14,12	WLPAJ172053
1723	631	600	600	1162	196,5	3,52	15,07	WLPAJ172063

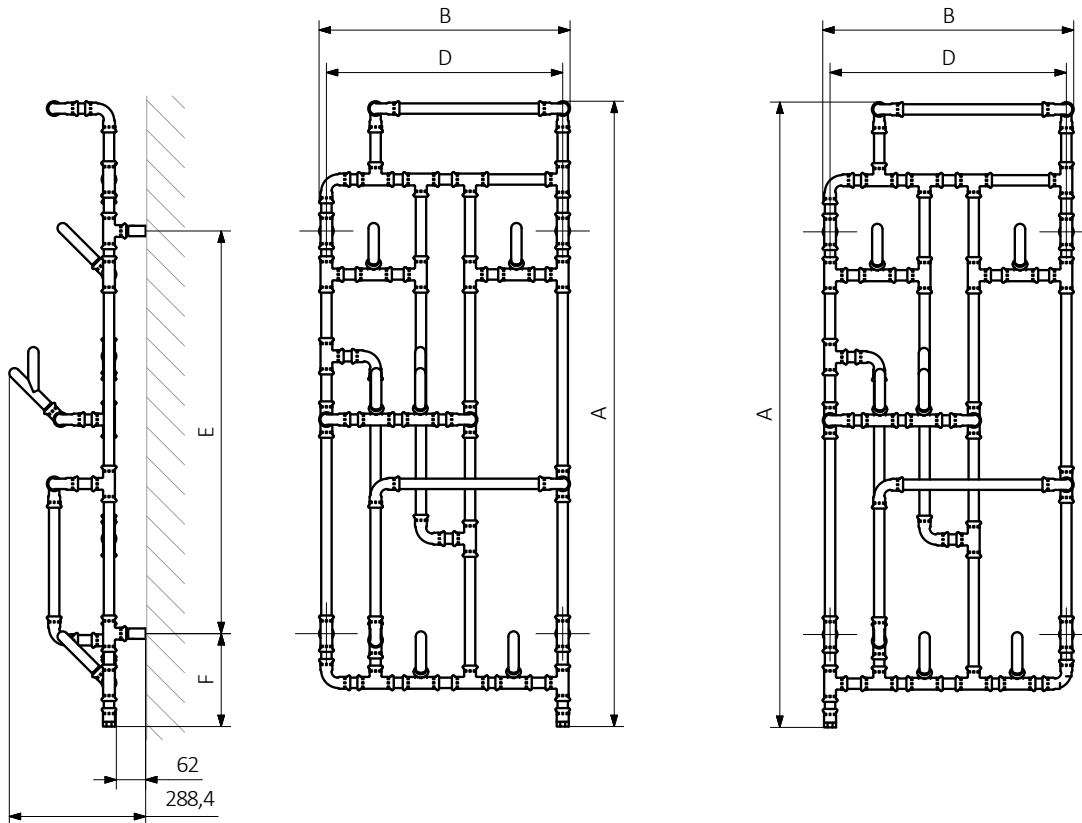
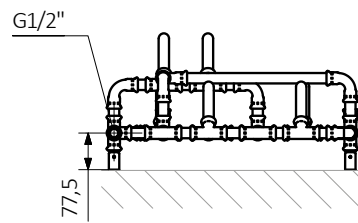


## Technical drawing:

E8

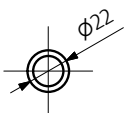


E1



A – Height B – Width C1-C5 – Distance between pipe centres D – Horizontal distance between mounting bracket centres  
E – Vertical distance between mounting brackets F – Distance between a mounting bracket and the bottom of the radiator

Pipe:





In the table with technical data, the last column lists product codes. When placing an order, please remember to quote the product code followed by the configuration code as shown in the diagram below:

## Construction of electric heater configuration code:

WLPAJ136050

PRODUCT CODE  
(located in the table for the product)

KMIEE8

CONFIGURATION CODE  
(supplemented by hand)

### Example Configuration

**K** **MIE** **E8** **SIM** **R**

Package code  
*K - carton box*

Connection code

Heating element code

Type of heating element cable code



## Legenda



Radiator available in a "water" version.



Radiator suitable for dual fuel connection. Electric heating element can be installed.



Radiator available in electric only version. It comes prefilled with a 'heating medium' and equipped with a heating element. All tested and ready to use.



Connection types dedicated for this radiator. The icon shows the flow and return connections for the radiator as well as the thermostatic valve and heating element position if applicable.



Suggested heating element power output for electric and dual fuel versions.



Weight.



Capacity.



Available in chrome finish.



No additional payment for a color.