

Integrated thermostatic T-piece valve set

Available versions:



The left or right-hand version determines the position of the thermostatic insert or manual valve with male thread.

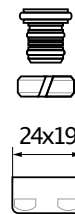
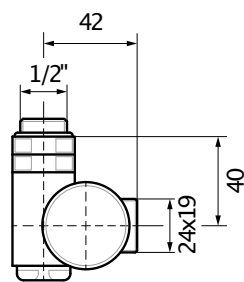
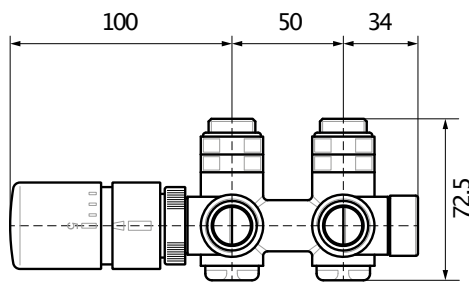
Colour Options: ● ●

Dedicated to the radiator:

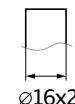
Michelle, Warp S, Iron D, Iron S



Note: Due to the protection of the thermal fuse of the heating element, we recommend installing the element on the return side



24x19

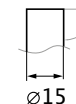


Ø16x2

Adapter for ALU-PEX installaKon



24x19



Ø15

Adapter for copper installaKon

Position	Size	Colour	Product code
Left	GZ 1/2" - Ø16x2, Ø15	Chrome	WRZT5G14-CR
Right	GZ 1/2" - Ø16x2, Ø15	Chrome	WRZT5G15-CR
Left	GZ 1/2" - Ø16x2, Ø15	Satin	WRZT5G14-ST
Right	GZ 1/2" - Ø16x2, Ø15	Satin	WRZT5G15-ST