

# Perła E



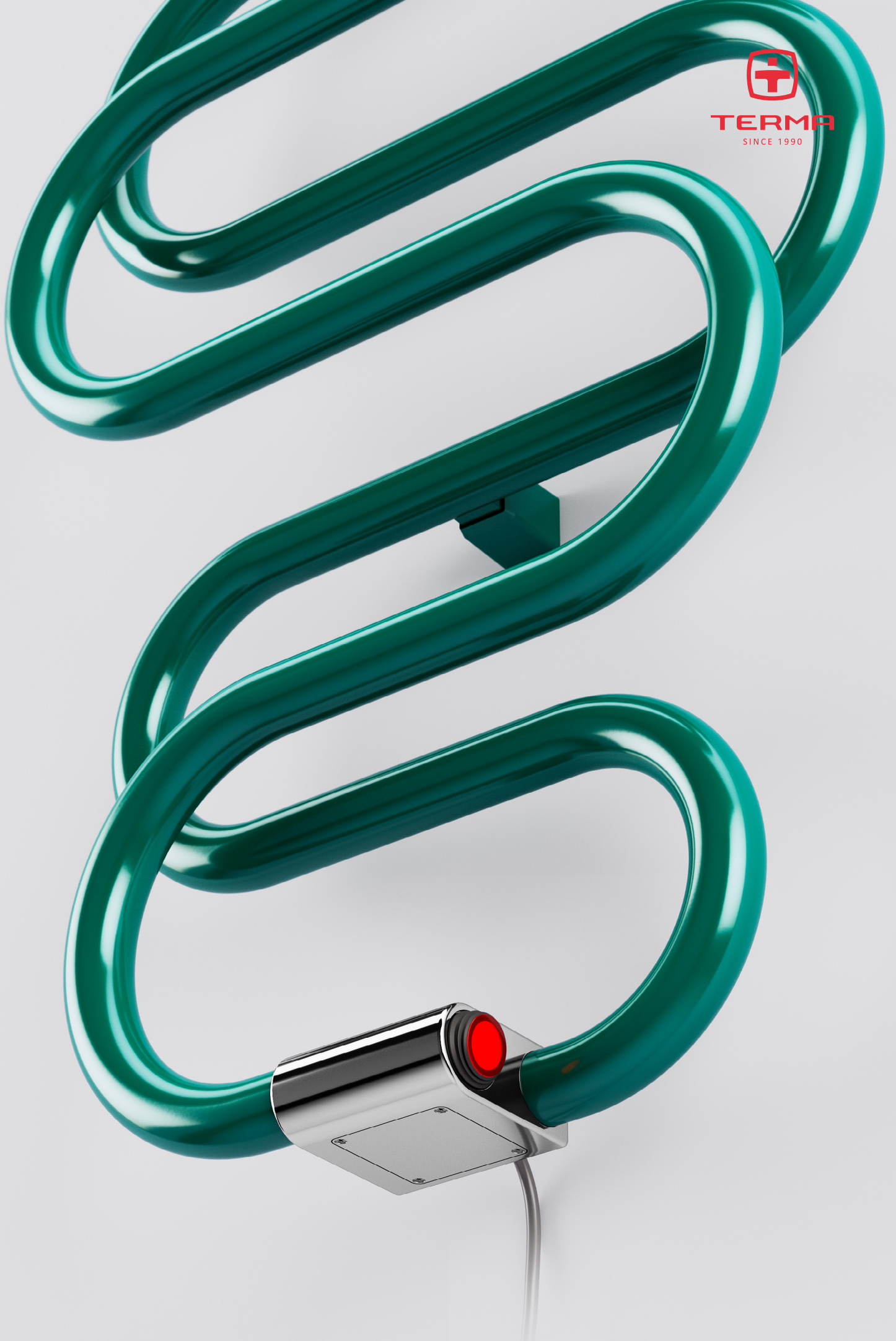
colour included  
in the price



**Perła E** 1360↓ × 500↔ EX  
colour: RAL 6026



**TERMA**  
SINCE 1990



# Perta E



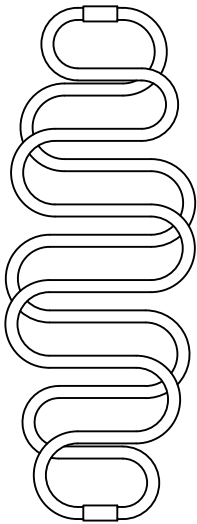
colour included  
in the price

Projekt : *Terma*

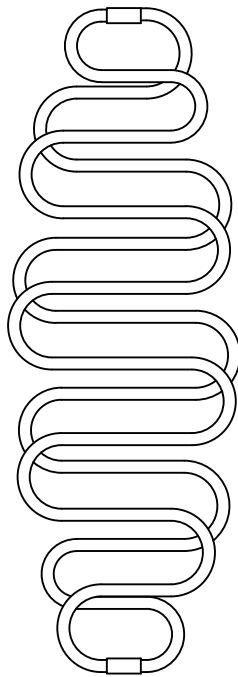
## Connections:



## Available sizes:





1360 x 500  
↕ ↔



1760 x 600

## Specification:

A ↕ [mm]	B ↔ [mm]	 [W]	D [mm]	E [mm]	F [mm]	 [kg]	Product code <small>Configuration code p.5</small>
<b>Paint</b>							
1360	500	284	160	600	340	13,46	WSPER136050
1760	600	455	290	600	540	18,52	WSPER176060
<b>Plating</b>							
1360	500	213	160	600	340	13,17	WSPER136050
1760	600	284	290	600	540	18,09	WSPER176060

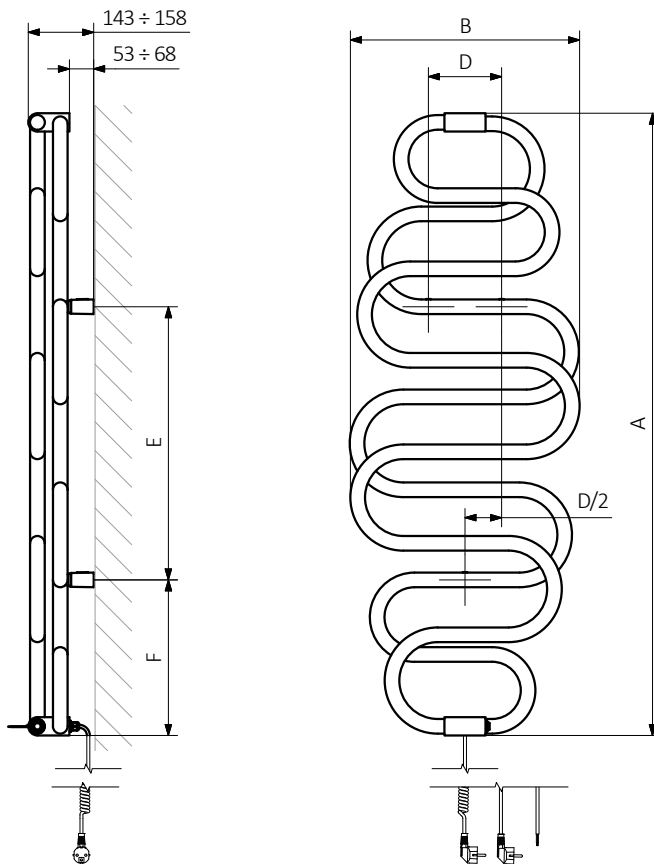
# Perta E



colour included  
in the price

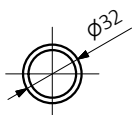
## Technical drawing:

EX



A – Height B – Width C1-C5 – Distance between pipe centres D – Horizontal distance between mounting bracket centres  
E – Vertical distance between mounting brackets F – Distance between a mounting bracket and the bottom of the radiator

Pipe :





In the table with technical data, the last column lists product codes. When placing an order, please remember to quote the product code followed by the configuration code as shown in the diagram below:

## Construction of electric heater configuration code:

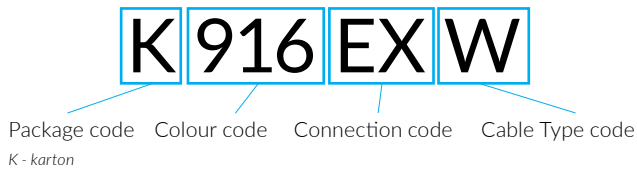
WSPER136050

PRODUCT CODE  
(located in the table for the product)

K916EXW

CONFIGURATION CODE  
(supplemented by hand)

### Example Configuration



## Epoxy primer

**E** – Code of epoxy primer is an extra processes.

WSPER136050 K916EX **E** — *Extra processes or additions code*

# Perta E



## Legend



Radiator available in a "water" version.



Radiator suitable for dual fuel connection. Electric heating element can be installed.



Radiator available in electric only version. It comes prefilled with a 'heating medium' and equipped with a heating element. All tested and ready to use.



Connection types dedicated for this radiator. The icon shows the flow and return connections for the radiator as well as the thermostatic valve and heating element position if applicable.



Suggested heating element power output for electric and dual fuel versions.



Weight.



Capacity.



Available in chrome finish.



No additional payment for a color.