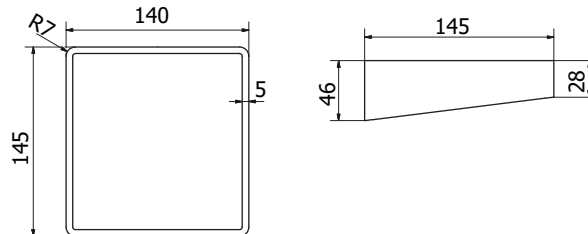


product technical sheet

**EVBR100 - EVBR101 - EVBR103**  
**Ever Life Design**  
**Brunt**

article code	
product family	
product line	
description	Toilet roll holder
performances	Maximum load: 150 kg.
certifications	TUV system certification UNI EN ISO 9001:2008.
product features	Product made of cold-bent and wire bold stainless steel. Blunted grab side. Direct wall mounting. Finishing: cataphoresis and painting. Complete with plastic roll holder.
technical details	Length: mm. 140. Length general tolerances: 0/300 +/-3 + 301/600 +/-4 - 601/2000 +/-5
fixing	Wall-mounting by means of plugs, not included. Choose plugs suitable to the type of wall.
maintenance	Check the correct fastening of the accessories periodically. Perform a proper cleaning with water and soap, do not use aggressive, abrasive or corrosive agents.
materials	Steel
notes	Art. EVBR100 white colour Art. EVBR101 opaque purple grey colour Art. EVBR103 opaque black RAL9011



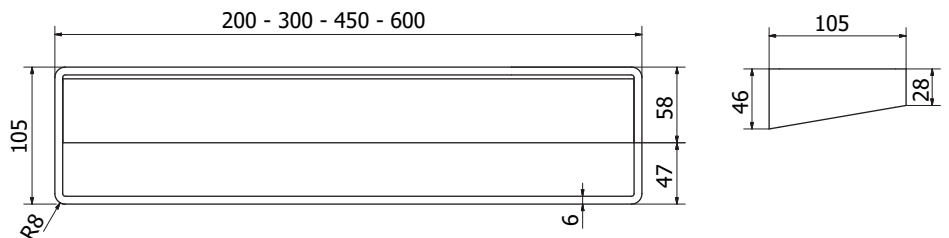
product technical sheet

# EVBR200 - EVBR201 - EVBR203

## Ever Life Design

### Brunt

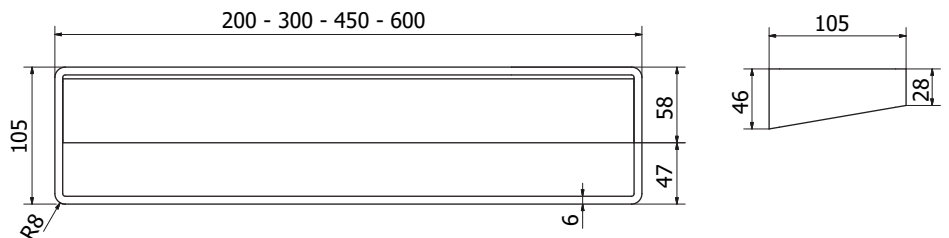
<p>article code</p> <p>product family</p> <p>product line</p> <p>description</p> <p>performances</p> <p>certifications</p> <p>product features</p> <p>technical details</p> <p>fixing</p> <p>maintenance</p> <p>materials</p> <p>notes</p>	<p>Towel holder with shelf, length 200 mm.</p> <p>Maximum load: 150 kg.</p> <p>TUV system certification UNI EN ISO 9001:2008.</p> <p>Product made of cold-bent and wire bold stainless steel. Blunted grab side. Direct wall mounting. Finishing: cataphoresis and painting.</p> <p>Length: mm. 200. Length general tolerances: 0/300 +/-3 + 301/600 +/-4 - 601/2000 +/-5</p> <p>Wall-mounting by means of plugs, not included. Choose plugs suitable to the type of wall.</p> <p>Check the correct fastening of the accessories periodically. Perform a proper cleaning with water and soap, do not use aggressive, abrasive or corrosive agents.</p> <p>Steel</p> <p>Art. EVBR200 white colour          Art. EVBR201 opaque purple grey colour          Art. EVBR203 opaque black RAL9011</p>
--	---



product technical sheet

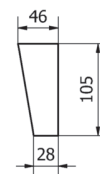
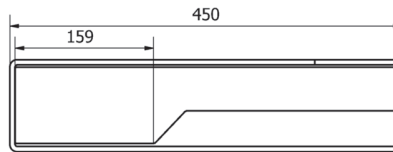
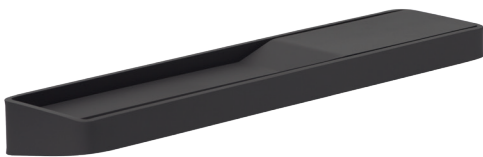
**EVBR300 - EVBR301 - EVBR303**  
**Ever Life Design**  
**Brunt**

article code	
product family	
product line	
description	Towel holder with shelf, length 300 mm.
performances	Maximum load: 150 kg.
certifications	TUV system certification UNI EN ISO 9001:2008.
product features	Product made of cold-bent and wire bold stainless steel. Blunted grab side. Direct wall mounting. Finishing: cataphoresis and painting.
technical details	Length: mm. 300. Length general tolerances: 0/300 +/-3 + 301/600 +/-4 - 601/2000 +/-5
fixing	Wall-mounting by means of plugs, not included. Choose plugs suitable to the type of wall.
maintenance	Check the correct fastening of the accessories periodically. Perform a proper cleaning with water and soap, do not use aggressive, abrasive or corrosive agents.
materials	Steel
notes	Art. EVBR300 white colour Art. EVBR301 opaque purple grey colour Art. EVBR303 opaque black RAL9011



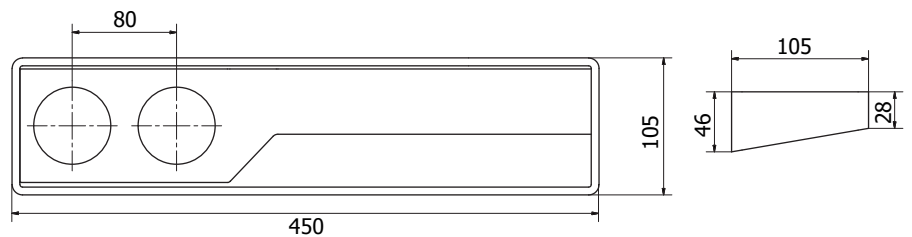
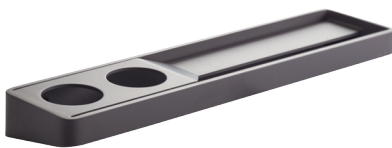
product technical sheet

article code	EVBR450RDX - EVBR450RSX - EVBR451RDX EVBR451RSX - EVBR453RDX - EVBR453RSX
product family	<b>Ever Life Design</b>
product line	<b>Brunt</b>
description	Towel holder with ledge, length 450 mm.
performances	Maximum load: 150 kg.
certifications	TUV system certification UNI EN ISO 9001:2008.
product features	Product made of cold-bent and wire bold stainless steel. Blunted grab side. Direct wall mounting. Finishing: cataphoresis and painting.
technical details	Length: mm. 450. Length general tolerances: 0/300 +/-3 + 301/600 +/-4 - 601/2000 +/-5
fixing	Wall-mounting by means of plugs, not included. Choose plugs suitable to the type of wall.
maintenance	Check the correct fastening of the accessories periodically. Perform a proper cleaning with water and soap, do not use aggressive, abrasive or corrosive agents.
materials	Steel
notes	Art. EVBR450RDX opaque white colour RAL9016 dx ledge Art. EVBR450RSX opaque white colour RAL9016 sx ledge Art. EVBR451RDX opaque purple grey colour dx ledge Art. EVBR451RSX opaque purple grey colour sx ledge Art. EVBR453RDX opaque black RAL9011 dx ledge Art. EVBR453RSX opaque black RAL9011 sx ledge



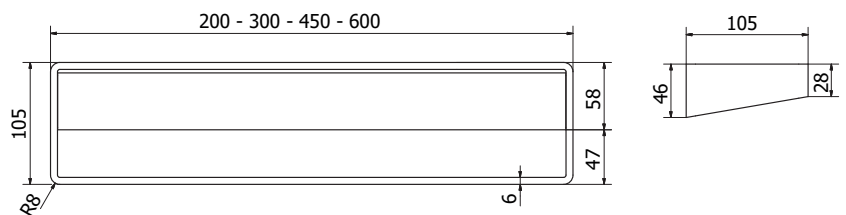
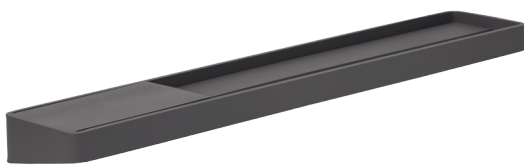
product technical sheet

article code	EVBR450 - EVBR450DX - EVBR450SX EVBR451 - EVBR451DX - EVBR451SX EVBR453 - EVBR453DX - EVBR453SX
product family	<b>Ever Life Design</b>
product line	<b>Brunt</b>
description	Towel holder with shelf, length 450 mm.
performances	Maximum load: 150 kg.
certifications	TUV system certification UNI EN ISO 9001:2008.
product features	Product made of cold-bent and wire bold stainless steel. Blunted grab side. Direct wall mounting. Finishing: cataphoresis and painting.
technical details	Length: mm. 450. Length general tolerances: 0/300 +/-3 + 301/600 +/-4 - 601/2000 +/-5
fixing	Wall-mounting by means of plugs, not included. Choose plugs suitable to the type of wall.
maintenance	Check the correct fastening of the accessories periodically. Perform a proper cleaning with water and soap, do not use aggressive, abrasive or corrosive agents.
materials	Steel
notes	Art. EVBR450 white colour Art. EVBR450DX white colour dx hole Art. EVBR450SX white colour sx hole Art. EVBR451 opaque purple grey colour Art. EVBR451DX opaque purple grey colour dx hole Art. EVBR451SX opaque purple grey colour sx hole Art. EVBR453 opaque black RAL9011 Art. EVBR453DX opaque black RAL9011 dx hole Art. EVBR453SX opaque black RAL9011 sx hole



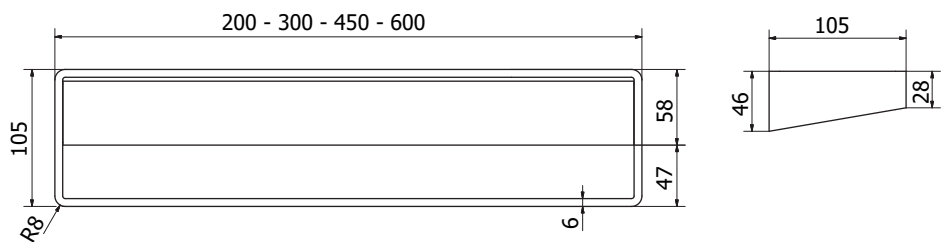
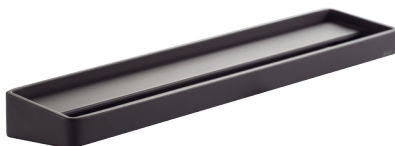
product technical sheet

article code	EVBR600RDX - EVBR600RSX - EVBR601RDX - EVBR601RSX EVBR603RDX - EVBR603RSX
product family	Ever Life Design
product line	Brunt
description	Towel holder with ledge, length 600 mm.
performances	Maximum load: 150 kg.
certifications	TUV system certification UNI EN ISO 9001:2008.
product features	Product made of cold-bent and wire bold stainless steel. Blunted grab side. Direct wall mounting. Finishing: cataphoresis and painting.
technical details	Length: mm. 600. Length general tolerances: 0/300 +/-3 + 301/600 +/-4 - 601/2000 +/-5
fixing	Wall-mounting by means of plugs, not included. Choose plugs suitable to the type of wall.
maintenance	Check the correct fastening of the accessories periodically. Perform a proper cleaning with water and soap, do not use aggressive, abrasive or corrosive agents.
materials	Steel
notes	Art. EVBR600RDX opaque white colour RAL9016 dx ledge Art. EVBR600RSX opaque white colour RAL9016 sx ledge Art. EVBR601RDX opaque purple grey colour dx ledge Art. EVBR601RSX opaque purple grey colour a sx ledge Art. EVBR603RDX opaque black RAL9011 dx ledge Art. EVBR603RSX opaque black RAL9011 sx ledge



product technical sheet

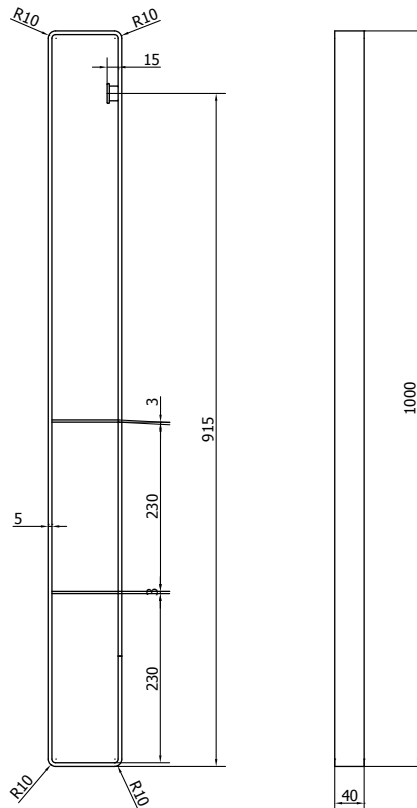
article code	EVBR600 - EVBR600DX - EVBR600SX - EVBR601 - EVBR601DX - EVBR601SX - EVBR603 - EVBR603DX - EVBR603SX
product family	Ever Life Design
product line	Brunt
description	Towel holder with shelf, length 600 mm.
performances	Maximum load: 150 kg.
certifications	TUV system certification UNI EN ISO 9001:2008.
product features	Product made of cold-bent and wire bold stainless steel. Blunted grab side. Direct wall mounting. Finishing: cataphoresis and painting.
technical details	Length: mm. 600. Length general tolerances: 0/300 +/-3 + 301/600 +/-4 - 601/2000 +/-5
fixing	Wall-mounting by means of plugs, not included. Choose plugs suitable to the type of wall.
maintenance	Check the correct fastening of the accessories periodically. Perform a proper cleaning with water and soap, do not use aggressive, abrasive or corrosive agents.
materials	Steel
notes	Art. EVBR600 white colour Art. EVB6600DX white colour dx hole Art. EVB6600SX white colour sx hole Art. EVBR601 opaque purple grey colour Art. EVB6601DX opaque purple grey colour dx hole Art. EVB6601SX opaque purple grey colour sx hole Art. EVBR603 opaque black RAL9011 Art. EVBR603DX opaque black RAL9011 dx hole Art. EVBR603SX opaque black RAL9011 sx hole



product technical sheet

**EVBR900 - EVBR901 - EVBR903**  
**Ever Life Design**  
**Brunt**

article code	
product family	
product line	
description	Vertical grab bar, length 1000 mm.
performances	Maximum load: 150 kg.
certifications	TUV system certification UNI EN ISO 9001:2008.
product features	Product made of cold-bent and wire bold stainless steel. Blunted grab side. It features two shelves and a hook. Direct wall mounting. Finishing: cathaphoresis and painting.
technical details	Length: mm. 1000. Length general tolerances: 0÷300 ±3 - 301÷600 ±4 - 601÷2000 ±5
fixing	Wall-mounting by means of plugs, not included. Choose plugs suitable to the type of wall.
maintenance	Check the correct fastening of the accessories periodically. Perform a proper cleaning with water and soap, do not use aggressive, abrasive or corrosive agents. Do not scratch the painting.
materials	Steel
notes	Art. EVBR900 white colour Art. EVBR901 opaque purple grey colour Art. EVBR903 opaque black RAL9011



ST\_PRODOTTO: EVBR900 - EVBR901 - EVBR903 - REV.00 REV.00 - 13/06/2017 - APPROVED T.D.

The above mentioned information cannot be considered as binding. Thermomat Saniline srl reserves the right to make technical and aesthetic changes without any prior notice.

Ever by Thermomat Saniline s.r.l. | Mantova | Italy

www.everlifedesign.it

