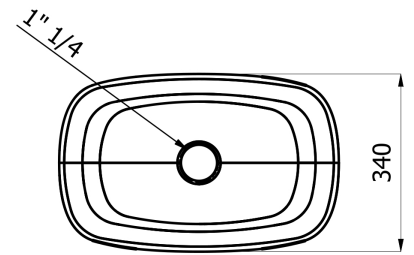
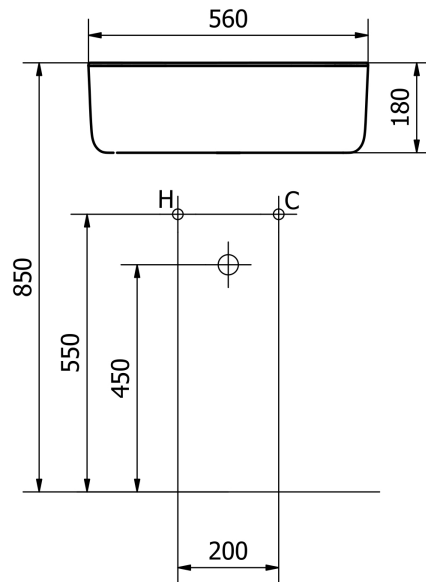


## product technical sheet

collection	<b>BOUNCE</b>
code	<b>EVLABOU - EVLABOUN</b>
description	Washbasin in soft polyurethane
certifications	TUV system certification UNI EN ISO 9001. Compliant to the Regulation 305/2011 and to the rule EN 14688.
features	Countertop installation: the product can be installed on a table top of the customer, or it can be installed on a bracket wall mounted made of steel. Color white or black. Smooth surface finish. Overflow not included. Waste coupling included, made of chrome-plated brass with always open tap made of white Corian or mat black painted. Available, on demand, the waste coupling click clack. Inside frame made of carbon-steel with galvanic treatment.
size	560 x 340 x 180 mm
installation	Install on a table top using 4 screws M6 ( table top and screws not included ), or wall mounting with a specific bracket ( not included, that you can order adding the code EVLASTA: bracket painted polished white, or EVLASTAN: bracket painted mat black ), using appropriate fasteners. Connect to the water drain. Check the solidity of the installation of the product, and make sure about a safely installation.
finishes	EVLABOU: white color with waste coupling in white Corian. EVLABOUN: clack color with waste coupling black painted.
maintenance	Check periodically the correct fixation of the washbasin. Clean only with neutral products, do not use aggressive or abrasive detergents; do not damage the surface.
materials	Polyurethane, steel.

product technical sheet



ST\_PRODOTTO: EVLABOU - EVLABOUN - REV.01 of 10/03/2021 - 13/05/21 - APPROVED C.V.